

## Weekly Drilling Report - Sunbeam 1 Exploration Well

Buru Energy Limited (Buru Energy) provides the following weekly update on drilling operations at the Sunbeam 1 well as at 06:00hrs, 29 January 2015 (AWST).

Since the last progress report, the well has been drilled ahead in 8½" (216mm) hole to a measured depth as at 06:00 hours today of 568 metres. The forward operation is to drill ahead to the first casing point planned at approximately 700 metres and run and cement 7" (178mm) casing.

The Sunbeam 1 well is located in exploration permit EP 129, and completion of the well will satisfy the Year 4 work commitment on that permit. Buru Energy has a 100% equity interest in the well and in EP 129. The well is located some 85 kilometres south east of Derby and some 18 kilometres south of the Gibb River Road.

Visit [www.buruenergy.com](http://www.buruenergy.com) for information on Buru Energy's current and future activities.

For inquiries please contact Buru Energy:

Telephone: +61 8 9215 1800

Freecall: 1800 337 330

Email: [info@buruenergy.com](mailto:info@buruenergy.com)

### About Buru Energy

Buru Energy Limited (ASX: BRU, S&P/ASX300) is a Western Australian oil and gas exploration and production company headquartered in Perth with an operational office in Broome. The Company's petroleum assets and tenements are located onshore in the Canning Basin in the southwest Kimberley region of Western Australia. Its flagship high quality conventional Ungani Oilfield project is owned in 50/50 joint venture with Mitsubishi Corporation. As well as Ungani, the Company's portfolio includes potentially world class tight gas resources.

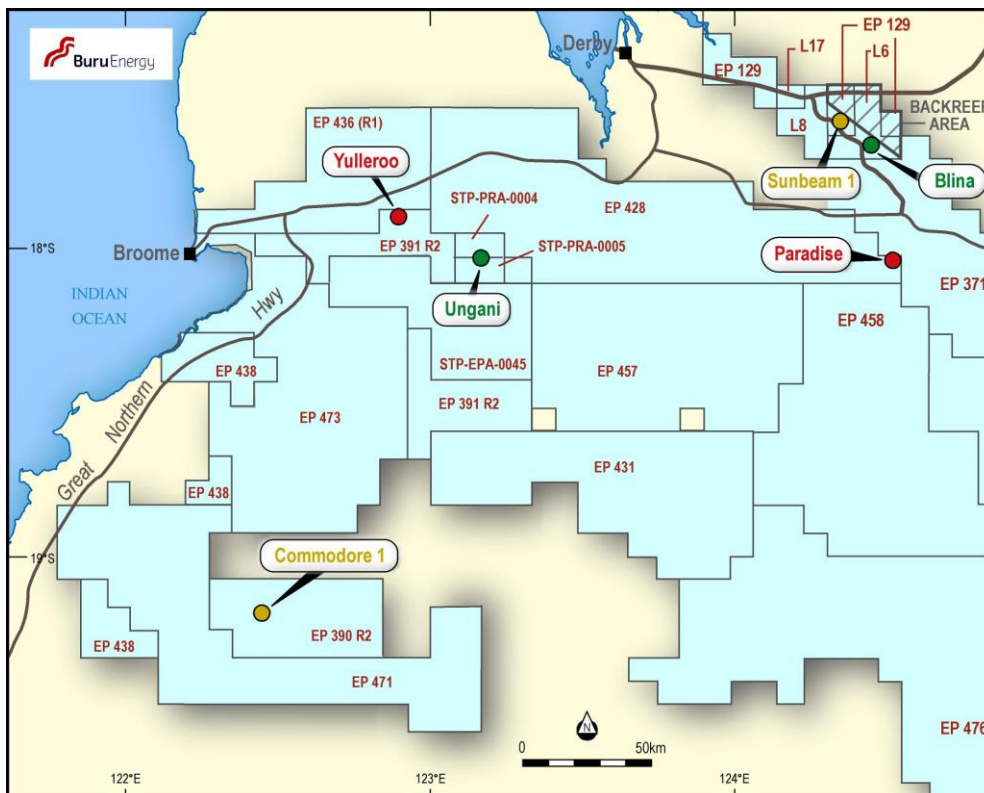
The company's goal is to deliver material benefits to its shareholders, the State of Western Australia, the Traditional Owners of the areas in which it operates, and the Kimberley community, by successfully exploring for and developing the petroleum resources of the Canning Basin in an environmentally and culturally sensitive manner.

### Competent Persons Statement

Information in this release related to exploration and production results and petroleum resources is based on information compiled by Eric Streitberg who is an employee of Buru Energy Limited. Mr Streitberg is a Fellow of the Australian Institute of Mining and Metallurgy and the Australian Institute of Company Directors, and a member and Certified Petroleum Geologist of the American Association of Petroleum Geologists. He has over 40 years of relevant experience. Mr Streitberg consents to the inclusion of the information in this document.

## Sunbeam 1 - Weekly Drilling Report

<b>PERMIT</b>	The Sunbeam 1 well is located in exploration permit EP 129 some 85 kilometres south east of Derby and some 18 kilometres south of the Gibb River Road.		
<b>WELL LOCATION</b>	Latitude: 17° 32' 26.5" S	Easting: 645252m	Longitude: 124° 22' 6.5" E
<b>BURU ENERGY'S INTEREST</b>	Buru Energy Limited holds a 100% interest in the well		
<b>DATE OF PROGRESS REPORT</b>	06:00 hours, 29 January 2015 (AWST)		
<b>PROPOSED TOTAL DEPTH</b>	1,200 metres		
<b>CURRENT DEPTH</b>	568 metres		
<b>PROGNOSED TIME TO COMPLETION</b>	16 days		
<b>SPUD DATE</b>	25 January 2015		
<b>DAYS SINCE SPUD</b>	4		
<b>CURRENT TARGET FORMATION</b>	The Sunbeam 1 well primary objective is conventional oil reservoirs in the early Permian aged Grant Formation.		
<b>OPERATIONS SINCE LAST PROGRESS REPORT</b>	Since the last progress report, the well has been drilled ahead in 8½" (216mm) hole to a measured depth as at 06:00 hours today of 568 metres.		
<b>HYDROCARBON INDICATIONS</b>	None - None expected.		
<b>FORWARD OPERATIONS</b>	Drill ahead to the first casing point planned at approximately 700 metres and run and cement 7" (178mm) casing.		



Location Map for Sunbeam 1 well